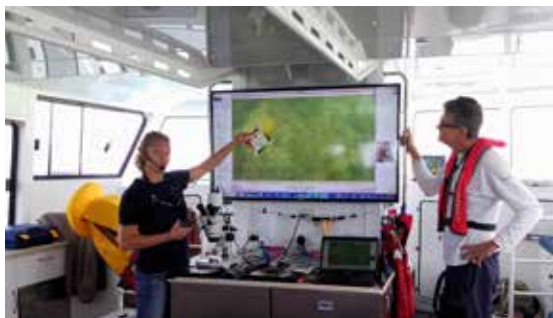


TEACHER PROFESSIONAL DEVELOPMENT - 16 JUNE 2017

# Corals at Your Doorstep



One day workshop for primary school teachers includes lectures, practical and field activities

*Did you know that Moreton Bay is home to more than 110 species of coral? Explore a range of tools and extend your knowledge to engage students in science to help protect this precious marine environment – so close to home.*

## OUTCOMES

- Investigate Moreton Bay corals, the importance and environmental issues such as coral bleaching.
- Utilise CoralWatch tools and curriculum linked materials to bring the reef into your classroom.
- Explore Moreton Bay Environmental Education Centre (MBEEC) and the boat 'MV Inspiration'.

## DRAFT PROGRAM 9 AM - 3PM

Time	Activity
8.45	Teachers meet at William Gunn Jetty (Wyvernleigh Cl, Manly)
9.00 - 11.30	Observe and learn about Moreton Bay coral habitats using drop cameras, underwater footage and CoralWatch Coral Health Charts on board the 'MV Inspiration'
12.00	Lunch at MBEEC (162 Stradbroke Ave, Wynnum)
13.00 - 15.00	Presentation: Dr Monique Grol - 'Moreton Bay Corals, Biology and Reef conservation' Practical session: Ms Diana Kleine - 'CoralWatch Curriculum linked lesson materials'

Please turn over for more information on speakers and programs.

## COST

**Early bird rate: \$30.00** (incl.GST)  
(register before 30 April 2017)  
Standard: \$40.00 (incl.GST)  
Incl.: One day workshop, lunch and a range of take-home materials.  
Size: Limited to 25 participants.

**For more information contact:**  
CoralWatch - Diana Kleine - [info@coralwatch.org](mailto:info@coralwatch.org)  
(07) 33653127  
**To register:**  
MBEEC - [admin@moretoneec.eq.edu.au](mailto:admin@moretoneec.eq.edu.au)  
(07) 3906 9111

## Registration - Teacher PD 16 June 2017

First name: \_\_\_\_\_ Family name: \_\_\_\_\_

School: \_\_\_\_\_ Position: \_\_\_\_\_

Work Address: \_\_\_\_\_ City: \_\_\_\_\_

Email: \_\_\_\_\_ Mobile phone: \_\_\_\_\_

Dietary requirements: \_\_\_\_\_

Comments: \_\_\_\_\_



This workshop is organised by CoralWatch in collaboration with Moreton Bay Environmental Education Centre and supported by The University of Queensland.

## SPEAKERS



### **Dr Monique Grol**

Project manager research CoralWatch

Monique has been working for CoralWatch since 2016 and brings in >12 years of international Marine Science experience and her passion for the ocean. She studied the importance of shallow-water habitats for common and commercially important fish species in East Africa and the Caribbean, and since 6 years she works in Australia and researches coral reef ecosystems in remote areas such as the Great Barrier Reef. Her responsibilities at CoralWatch include planning and organizing reef encounters, seeking opportunities and partnerships, developing context for new materials/programs and managing data. She has organised many events in the field, analysed large datasets, presented at teacher workshops and conferences and supervised volunteers and students.



### **Ms Diana Kleine**

Project manager education CoralWatch

Diana has been working for CoralWatch for 9 years and loves her job, which gives her the opportunity to integrate her experience and knowledge as teacher, graphic artist, and diving instructor. Her responsibilities include organizing the design, production, and marketing of all CoralWatch education and monitoring materials. She has organised many teacher workshops in Australia and Indonesia, teaching people of varying ages, nationalities, cultures, and interests about the amazing underwater world and how to help to preserve it.

Diana is co-author of the book 'Coral Reefs and Climate Change, the guide for education and awareness'

(Reid, C., Marshall, N. J., Logan, D. and Kleine D., (2012) Coral Reefs and Climate Change; Second revised edition, CoralWatch, The University of Queensland, Brisbane. 264p paperback and e-book. ISBN 9780646590851).



CoralWatch is a non-profit citizen science organization based at The University of Queensland. The program integrates global monitoring of coral bleaching with education about coral reef conservation.

**[www.coralwatch.org](http://www.coralwatch.org)**



Moreton Bay Environmental Education Centre is a day visit centre at Wynnum on the edge of beautiful Moreton Bay. Our vision is 'Inspiring Champions for the bay'. 'Champions for the bay' are individuals who have developed a deep connection to Moreton Bay and actively care for its future. **[www.moretoneec.eq.edu.au](http://www.moretoneec.eq.edu.au)**